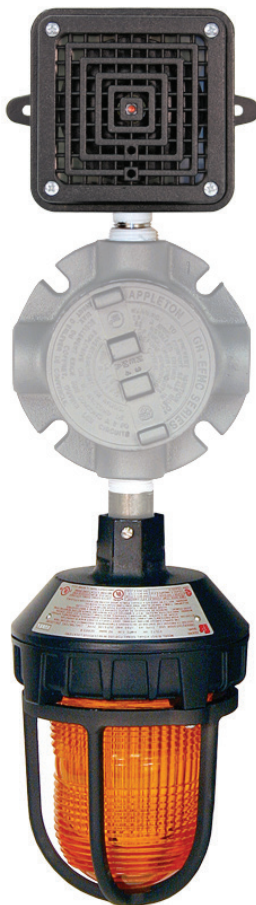




**TELEDYNE DETCON**  
Everywhereyoulook™

## AV1-C1D2C

Hazardous Duty  
Alarm Station  
Class 1, Division 2  
Continuous Tone



### Description

Detcon Model AV1-C1D2C audio visual alarm stations are designed for installation and use in heavy industrial environments. The complete unit is self-certified for Class 1 Div 2 hazardous area use. The alarm station consists of a warning light and a siren. The warning light can consist of any dome color such as amber, blue, clear, green, red, or magenta. The audible alarm is capable of producing coded blasts or sustained tones. Model AV1-C1D2C alarm assemblies are specifically designed for hazardous locations or corrosive environments where a very bright visual and high decibel alarm signal is required. The high-intensity strobe light provides 80 flashes per minute. The siren produces a noise level of 100dba @ 10 feet.

The light is UL listed and CSA Certified for Class I, Division 2, Groups A, B, C and D; Class II, Division I, Groups E, F, and G; and Class III. The siren is UL listed and CSA Certified for Class I, Division 2, Groups A, B, C and D; Class II, Division 2, Groups F, and G. Model AV1-C1D2C alarm components are pre-assembled and mounted on a four-way junction box with 3/4" NPT ports. The assemblies are NEMA 4X rain tight and suitable for installation in harsh locations. Overall dimensions are 21"H x 6"W x 10"D.



# AV1-C1D2C

Hazardous Duty - Alarm Station - Class 1, Division 2 - Continuous Tone

## Ordering Information

<b>Color of Strobe</b>	<b>977-1L</b>	<b>000-OF</b>
2 - Red	6 - Blue	3 - 120 VAC
4 - Amber	7 - Magenta	4 - 240 VAC
5 - Green	9 - Clear	

## Light Specifications

Voltage	120VAC 50/60HZ, 240VAC 50/60HZ
Mount	3/4" Pipe
Operating Current	0.32 Amps at 120VAC, 0.16 Amps at 240VAC
Dome Colors	Amber, Blue, Clear, Green, Magenta, Red
Dome Guard	Included
Operating Temperature Minimum	-31 °F to 150F
Light Source/Lamp Style	Strobe Tube
Lamp Life	10,000 Hours
Flash Rate/Minute	80
Candle Power Peak	520,000
Effective Candle Power	165
Enclosure Rating	Type 4X
Ingress Protection	IP66
Dimensions	8.75"H x 5.5" Diameter
Warranty	1 Year

## Siren Specifications

Voltage	120VAC 50/60HZ, 240VAC 50/60HZ
Mount	Surface / Panel
Operating Current	0.18 Amps at 120VAC, 0.09 Amps at 240VAC
Temperature Rating	-65°F to +150°F
Sound Output	100db @ 10feet, 110dB @ 1 meter
Duty Cycle	Not rated for continuous duty
Enclosure Rating	Type 4X
Height	5.3 in.
Width	5.3 in.
Depth	3.66 in
Warranty	1 Year



**AMERICAS**  
4055 Technology Forest Blvd.  
The Woodlands,  
TX 77381, USA  
Tel.: +1-713-559-9200  
Fax: +1-713-893-6729

**EMEA**  
ZI Est, Rue Orfila,  
CS 20417  
62027 ARRAS CEDEX, France  
Tel.: +33-3-21-60-80-80  
Fax: +33-3-21-60-80-00

**ASIA PACIFIC**  
290 Guiqiao Road  
Pudong, Shanghai 201206  
People's Republic of China  
Tel.: +86-21-3127-6373  
Fax: +86-21-3127-6365