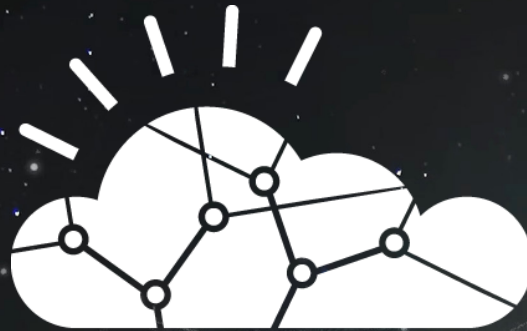




**TELEDYNE**  
GAS AND FLAME DETECTION  
Everywhereyoulook™

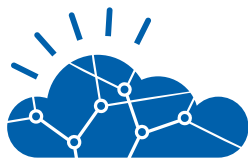


Embrace the  
**digital**  
**transformation**  
and unlock the  
**potential** with



**Teledyne GDCloud™**





Teledyne  
GDCloud™



### Portable gas detectors

Hundreds of portable gas detectors can be networked to our GDCloud for enhanced protection of the workforce

### Compliance Everywhere

The calibration status of each device can be monitored and recorded for regulatory compliance reporting with cloud-scale data storage and archiving potential



### Data Sharing

Our GDCloud cybersecurity protocols enable transmission of essential data to trusted parties such as Teledyne remote service experts and the regulatory authorities



### Track and Analyse

Data from each gas detector is captured and converted to actionable management information, maximising safety and efficiency



### Portable infrared gas leak detector

Our GS700 gas leak finder, with optional GPS mapping, can communicate with the GDCloud for full team visibility of leak tracking in real time and comprehensive reporting



### Predict and Secure

Condition-based and planned preventative maintenance regimes can be enabled using data from the GDCloud



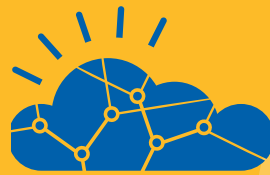
### Automated Maintenance

If required, the status of your gas and flame detection equipment can be made available from the GDCloud to Teledyne service teams to assist with device maintenance



### Location Tracking

Our mapping and data recording tools are essential for efficient gas pipeline leak detection monitoring surveys



# Digitalisation

for safety and efficiency



Industry 4.0, Smart Manufacturing, Connected Products, these are not only words but **taking life in our daily activities**. Digitalization is a key step to better control and improve operational processes, boost productivity, drive growth but also **improve plant safety**. The visibility of the user is significantly enhanced through the access to real time field data and allows better safety and business decisions.

Teledyne Gas and Flame Detection, expert and historical manufacturer of fixed and portable gas and flame detection solutions, now offers you the capability to monitor the gas readings from all your sites **from anywhere you want**.

Our Teledyne GD Cloud solution provides real time gas readings, alarm conditions, historical data, alarm records and even remote alarm acknowledgement. You now can **centralize data for all your sites with a 24/7** remote access from any internet connected device with a web browser.

Enhance safety with **instant visibility** to gas detection readings and own your data with our cloud-based management solution.

## Embrace digital transformation and unlock the potential with Teledyne GD Cloud.

Teledyne GDCloud system provides the gas utility market with a cloud based solution for **viewing and analyzing** field collected gas detection and instrument calibration data. The system will also include a comprehensive instrument management system for scheduling calibrations and recording instrument service information. As a cloud based system it is secure, flexible, scalable and agile.

Teledyne GDCloud™ elevates your gas and flame detection network to the next level of safety, reliability and efficiency. People and assets are better protected. Leak detection and repair is simplified. Maintenance costs are minimised. Compliance is taken care of. Teledyne GDCloud – always sensing safety.

# Detection goes digital

and you reap  
the benefits



Digitalisation has been the enabler of Industry 4.0. Implementation has been through machine learning, artificial intelligence, digital twins, location tracking, the industrial internet of things and cloud computing.

Costs have tumbled, platforms have standardised and world-class service providers have emerged to build the digital infrastructure. At Teledyne, we have incorporated these developments and into our gas and flame detection equipment and GDCloud solution. It means that you stand to benefit from improved safety and efficiency and your gas and flame detection system can enter the digital age with confidence.



| Locations                     |    |   |   |
|-------------------------------|----|---|---|
| * Gas Measurement Instruments | 0  | ↗ | ⊞ |
| Location #1                   | 0  | ↗ | ⊞ |
| * Building #1                 | 0  | ↗ | ⊞ |
| * Room #1                     | 0  | ↗ | ⊞ |
| Team #1                       | 07 | ↗ | ⊞ |
| Location #2                   | 0  | ↗ | ⊞ |
| * Building #2                 | 0  | ↗ | ⊞ |
| * Room #2                     | 3  | ↗ | ⊞ |
| Team #2                       | 22 | ↗ | ⊞ |

| Instruments 27 - Construction |               |                 |
|-------------------------------|---------------|-----------------|
| <input type="checkbox"/>      | Serial Number | Model           |
| <input type="checkbox"/>      | 717876        | GasAnalyzer 700 |
| <input type="checkbox"/>      | 717877        | GasAnalyzer 700 |
| <input type="checkbox"/>      | 717878        | GasAnalyzer 700 |
| <input type="checkbox"/>      | 717879        | GasAnalyzer 700 |
| <input type="checkbox"/>      | 717880        | GasAnalyzer 700 |
| <input type="checkbox"/>      | 717881        | GasAnalyzer 700 |
| <input type="checkbox"/>      | 717882        | GasAnalyzer 700 |
| <input type="checkbox"/>      | 717883        | GasAnalyzer 700 |
| <input type="checkbox"/>      | 717884        | GasAnalyzer 700 |
| <input type="checkbox"/>      | 717885        | GasAnalyzer 700 |
| <input type="checkbox"/>      | 717886        | GasAnalyzer 700 |



# Teledyne GDCloud functionality and architecture

Teledyne Gas and Flame Detection stands for the safety of your people and security for your assets. Teledyne GDCloud™ builds on our values to mean empowerment of your people and security of your data. Detect, act.

Beyond Gas and Flame Detection, our GDCloud™ enables better maintenance, safer operations and a more productive workforce. Detect, act better.



|  |     |
|--|-----|
| Integrated gas and flame detection through the GDCloud             | YES |
| Compatible with major PaaS providers                               | YES |
| Supports a cost-effective condition-based maintenance programme    | YES |
| Retrofitable to existing compatible gas & flame detection hardware | YES |
| Secure communication from the controller to the GDCloud            | YES |
| Secure access to the GDCloud with cybersecurity protocols          | YES |
| Internal visibility of data and management information             | YES |
| Equipment status and fault reporting for reactive maintenance      | YES |
| Remote trouble shooting and diagnostics from Teledyne experts      | YES |
| Alarm prioritisation possible                                      | YES |
| SIL2 compatible  | YES |
| Data collection and storage for compliance purposes                | YES |

# Common questions and concerns, let's ask **the expert**



***Will we need to invest in a complete new gas and flame detection network ?***

No. It is likely that the majority of your existing Teledyne Gas and Flame Detection equipment and controllers can be adapted and re-used in the GDCloud environment.



***Will my GDCloud implementation be a risky project?***

No. We have expert installation teams to execute or support your project. Furthermore, we use the principles of functional safety to minimise risk.



***Will the GDCloud comply with our SIL2 rated gas and flame detection strategy?***

Yes, it can. Teledyne offers a range of hardware and software solutions within the GDCloud platform that are compatible for integration into SIL2 classified systems. Some equipment can also be used in SIL3 systems.



***Will I be overloaded with masses of data from the GDCloud?***

No, on the contrary. Teledyne's intelligent solution gathers data and provides valuable information. For example, alarms can be prioritised so that "important and urgent" comes to your attention ahead of lower level risks.



***Is the GDCloud a very expensive solution?***

No. Implementing the GDCloud represents only a small cost-adder to a conventional gas and flame detection system. Furthermore, productivity savings will quickly deliver a return on your investment in the GDCloud.



***Will my installation be a "first of a kind" for Teledyne?***

No, we have successfully completed multiple GDCloud solution implementations worldwide.

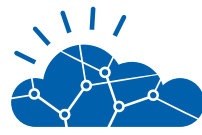


***Will my data be secure to my company and authorised third parties?***

Yes. The GDCloud has been designed with cyber-security built-in. The extent of data transfer, for example to the regulatory authorities, can be controlled by you. The cloud computing and PaaS providers we use are world-class.

# Teledyne GDCloud™

Field Data is Business Data



Teledyne  
GDCloud™



Contact us for  
a free demonstration  
or further information.



 **TELEDYNE**  
GAS AND FLAME DETECTION  
Everywhere you look™

[gasandflamedetection@teledyne.com](mailto:gasandflamedetection@teledyne.com)  
[www.TeledyneGFD.com](http://www.TeledyneGFD.com)